

# Condor Manual



# PREFACE

## **IMPORTANT, PLEASE READ CAREFULLY**

Thank you for your purchase with Amico Accessories Inc.

This unit is designed for long lasting performance, providing the end user complies with assembly and maintenance procedures. This Instruction Manual is your guide to ensure that you get the best performance out of the equipment. Amico Accessories is not responsible for any damage as a result of (but not limited to) abuse and other problems that may be a direct or indirect result of failure to comply with the instructions provided in this manual.

### **Please note these key words and symbols:**



**WARNING** Steps where extra care should be taken to prevent injuries and damage.

**NOTE** Steps that point out helpful information.

### **MEDICAL FACILITY Responsibilities**

Preventative maintenance checks must be performed regularly to maintain the quality and performance of this product. Any parts that may be broken, missing, worn, distorted, or contaminated in any way should not be used and all affected parts should be replaced immediately. Should the necessity of any repair be suspected; please contact your local distributor.

# CONTENTS

<b>Section 1: Product Specifications</b>	<b>4</b>
Features	5-6
<b>Section 2: Installation Preparation</b>	<b>7</b>
Installation, Tools and Part Requirements	7
Pre-Installation Information	7
<b>Section 3: Installation on Wall</b>	<b>8</b>
Mounting Preparation	8
Mounting on Wall with Studs/Backing	8
Mounting on Hollow Wall	9
<b>Section 4: Equipment Installation</b>	<b>10</b>
Equipment Mounting Recommendation	10-11
Mounting of Accessories	12-13
<b>Section 5: Adjustments</b>	<b>14</b>
Adjusting the Counterbalance	14
Adjusting Inter-Accessory Distance	14
<b>Section 6: Cable Management</b>	<b>15</b>
Cable Requirement for CPU Mounting on Top	15
Cable Routing Procedure	15
<b>Section 7: Maintenance and Troubleshooting</b>	<b>16</b>

# SECTION 1: Product Specifications

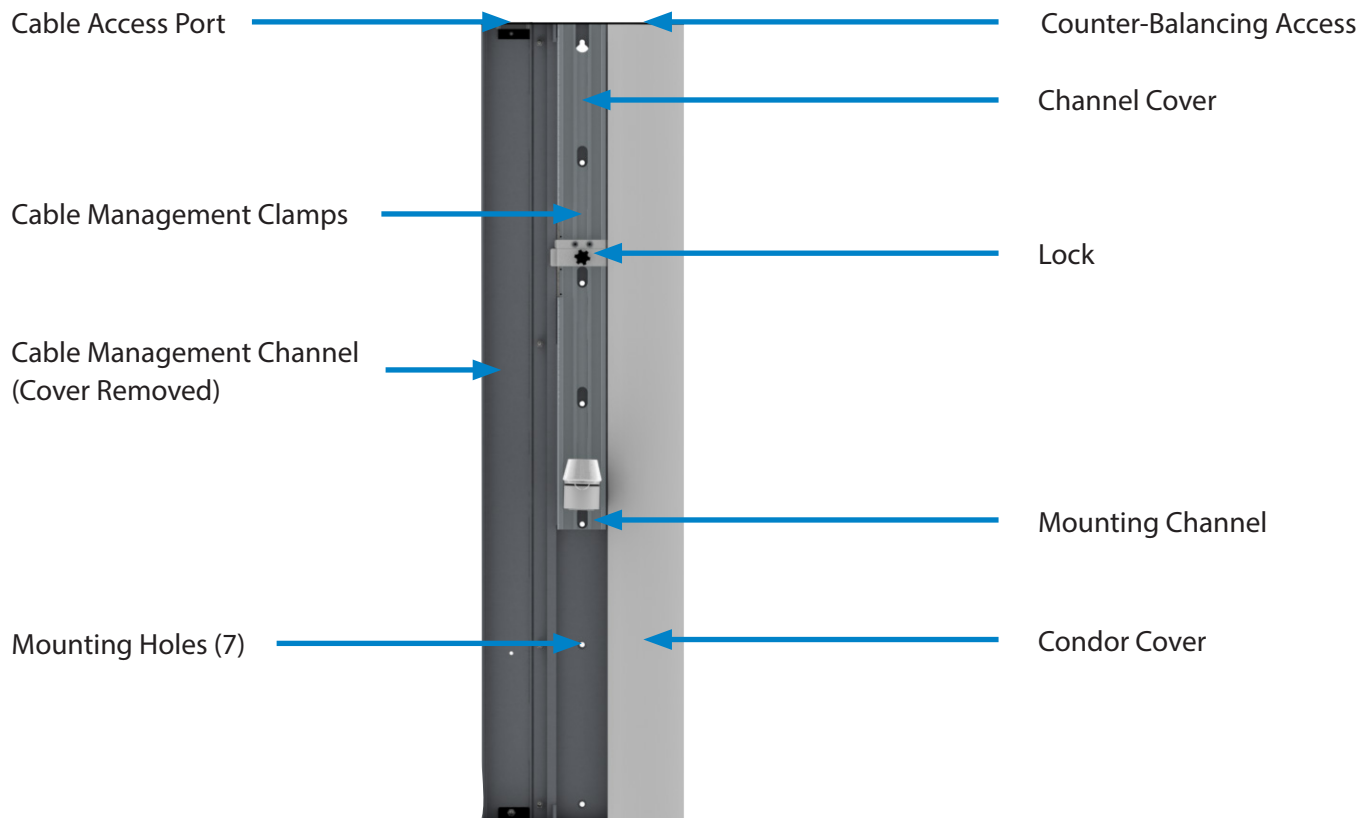
**Height:** 45"/114.3 cm

**Width:** 12"/30.5 cm

**Thickness:** 3"/7.6 cm

**Vertical motion range:** 17"/43.2 cm

**Mounting channel length:** 28"/71.1 cm



## **Cable Access Port**

For inserting wire and cabling into cable management system

## **Counter-Balancing Access**

Point of access for adjusting counter-balancing of the Condor

## **Cable Management Clamps**

For clamping the cable to the mounting channel

## **Channel Cover**

For covering unused portions of the channel

## **Cable Management Channel**

For routing and movement of cabling with the mounting channel

## **Lock**

For locking the mounting channel's position relative to the Condor

## **Mounting Channel**

For mounting accessories

## **Mounting Holes (7)**

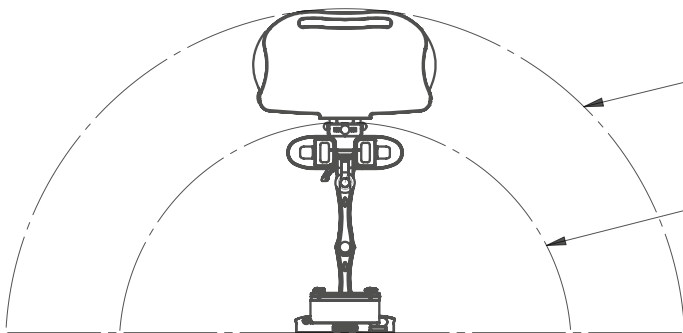
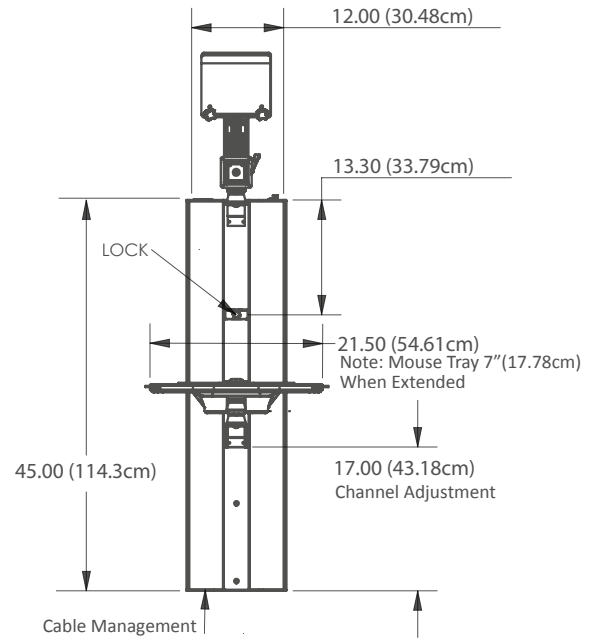
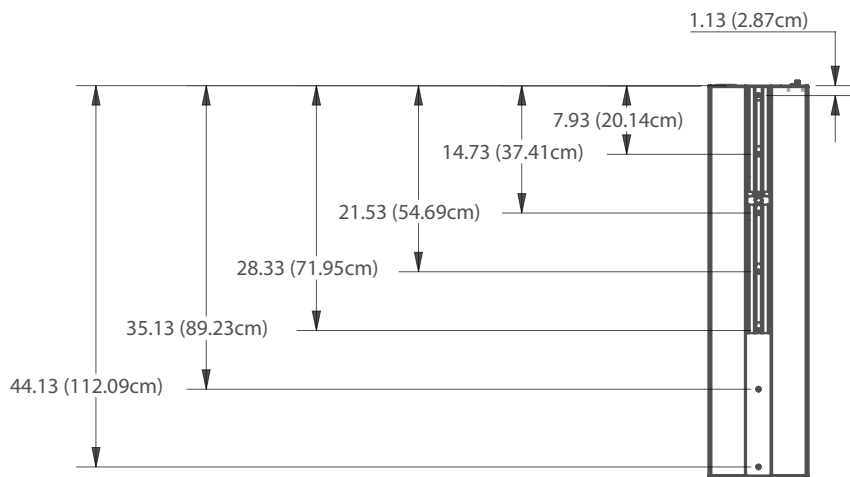
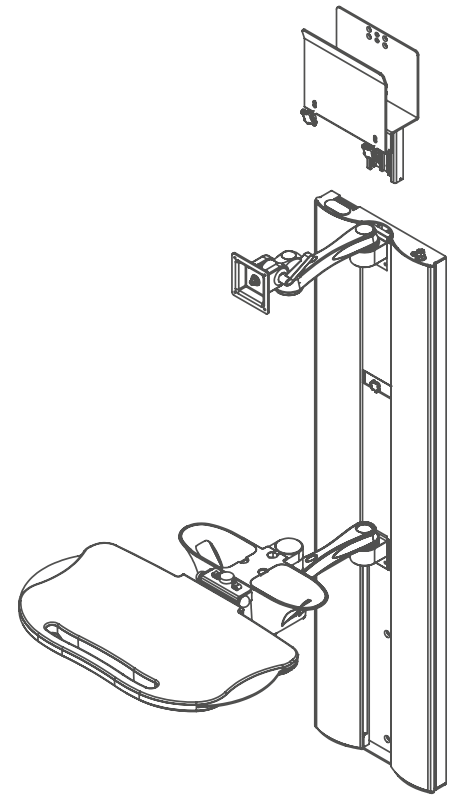
For mounting the system to the wall

## **Condor Cover**

For covering the sides of the Condor

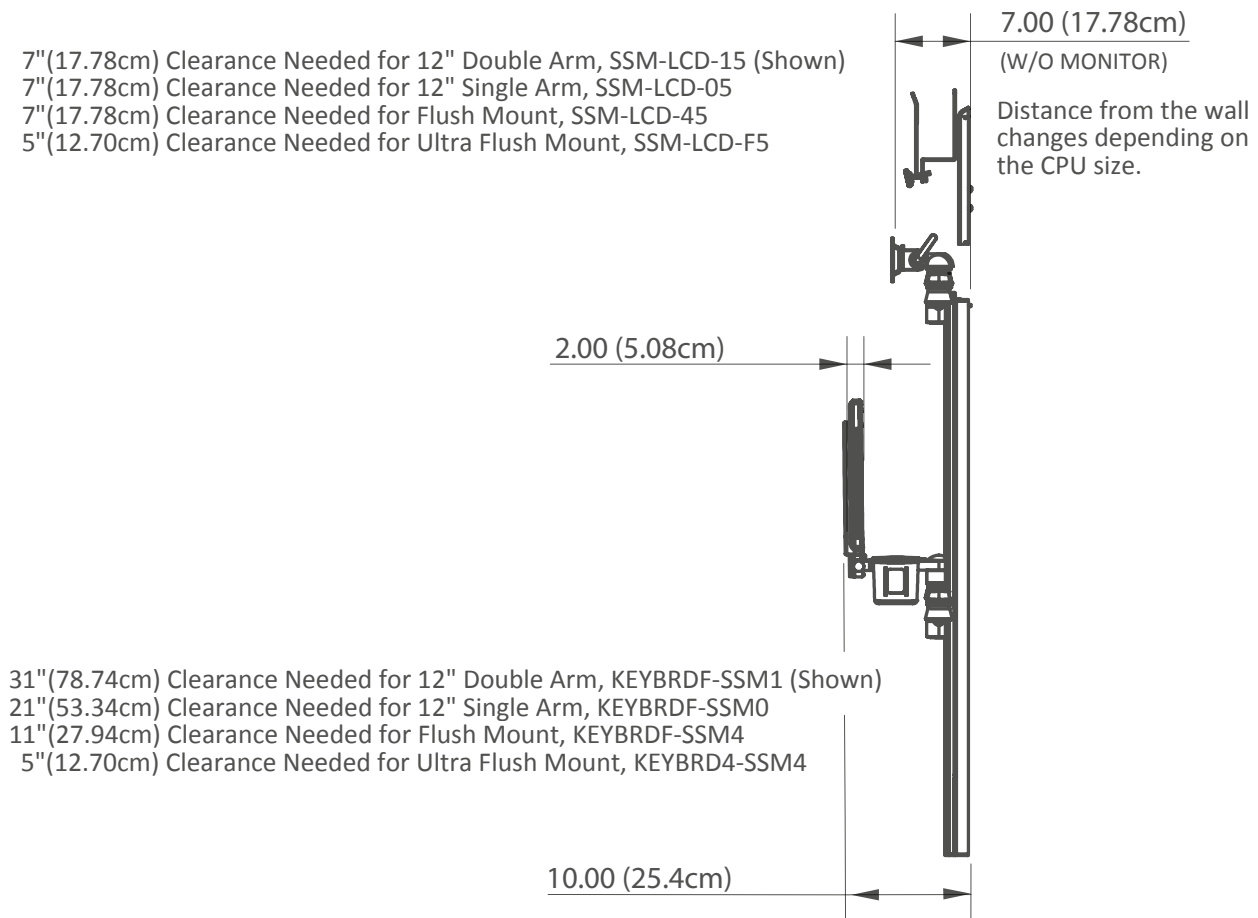
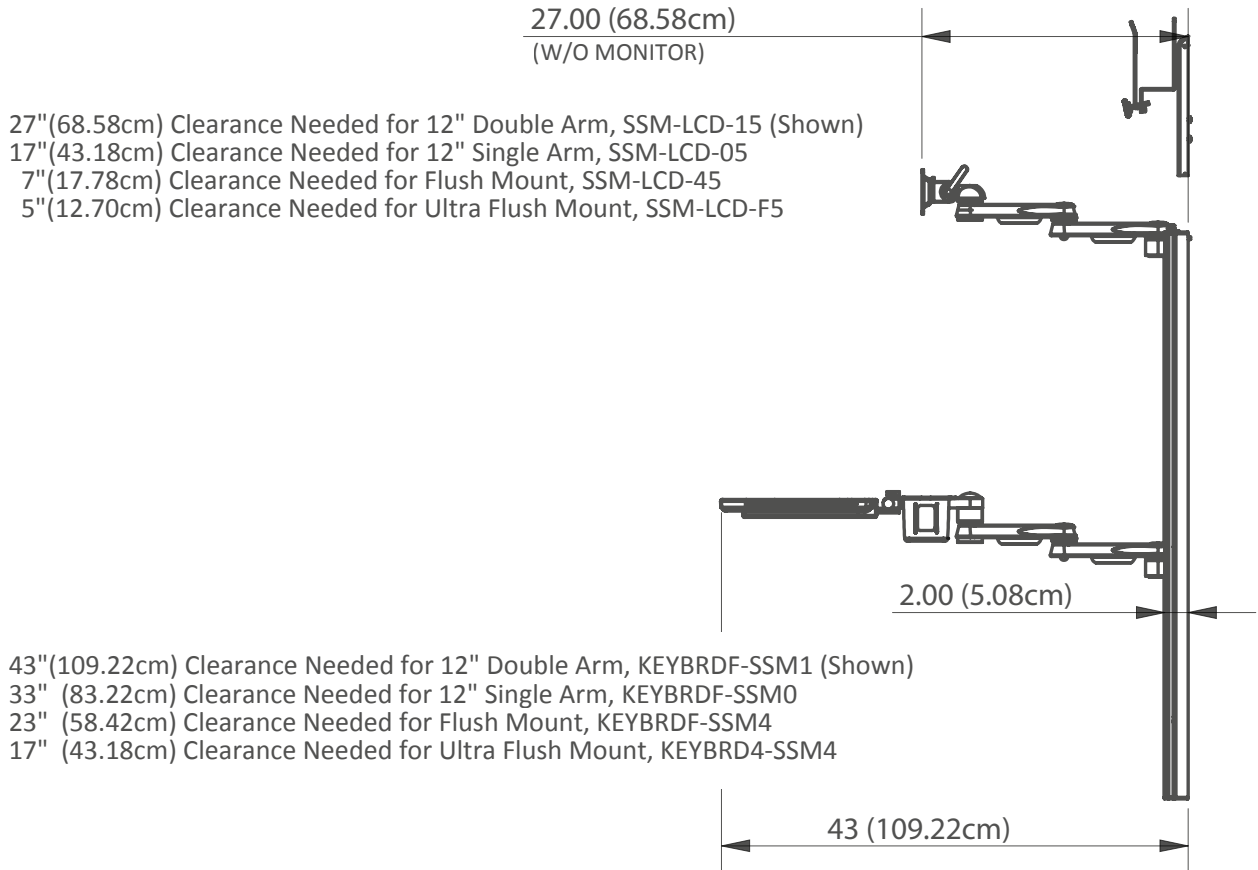
# FEATURES

- Used for mounting monitors and keyboards on Amico SSM Arms to provide vertical adjustment
- Counter-balanced to provide ease of movement
- Mounting channel height adjustable up to 17 inches (43.18 cm)
- Concealed cable management
- Adjustable load range (10 to 30 lbs, 20 to 40 lbs) (4.5 to 13.6 kg, 9 to 18.1 kg) adjustment can be made at the top right corner.
- Ergonomic positioning options for the keyboard and monitor
- Lock mounting channel position by tightening Lock-knob



- 48" (121.92cm) Clearance Needed for 12" Double Arm, KEYBRDF-SSM1 (Shown)
- 38" (96.52cm) Clearance Needed for 12" Single Arm, KEYBRDF-SSM0
- 28" (71.12cm) Clearance Needed for Flush Mount, KEYBRDF-SSM4
- 24" (60.96cm) Clearance Needed for Ultra Flush Mount, KEYBRD4-SSM4
- 32" (81.28cm) Clearance Needed for 12" Double Arm, SSM-LCD-15 (Shown)
- 22" (55.88cm) Clearance Needed for 12" Single Arm, SSM-LCD-05
- 12" (30.48cm) Clearance Needed for Flush Mount, SSM-LCD-45
- 12" (30.48cm) Clearance Needed for Ultra Flush Mount, SSM-LCD-F5

# FEATURES



## SECTION 2: Installation Preparation

### Installation, Tools and Part requirements

#### Tools required:

- Drill
- Drill bit size 9/64" (0.35 cm)
- Drill bit size 1/2"(1.27 cm)
- Philips screwdriver
- Allen Key size 5/32" (0.39 cm)
- Allen Key Size 1/8" (0.31 cm)
- 1/2" Socket Wrench (1.27 cm)

**NOTE:** Amico does not provide any monitor hardware, nor the tools necessary for assembly.

#### Hardware required:

- 2 X Mounting channel stopper with 10-32 screw, 1/2" (1.27 cm) (provided by Amico)
- Wall with studs/backing: 7 X Self drill screws, 1/4-20, 3" (7.62 cm) (provided by Amico)
- Hollow wall: 7 X 1/4 (0.635 cm)-20 x 2 1/2" (6.35 cm) Flat head socket screws-fully threaded, 7 X Snap toggle wings

#### Other Items Provided by Amico:

- Condor Channel
- Accessories, mounting adapters, and arms if purchased through Amico Accessories Inc.

### Pre-Installation Information (PLEASE READ CAREFULLY BEFORE STARTING)



#### WARNING

IT IS DANGEROUS TO USE THE CONDOR FOR WEIGHTS OUTSIDE OF THE RATED RANGE. STRUCTURAL FAILURE AND/OR SERIOUS INJURY COULD RESULT.



#### WARNING

DO NOT POSITION THE CONDOR ABOVE A PATIENT.

The Condor contains a strong gas spring which is used to counter-balance the weight of the mounted device. The Condor housing should never be disassembled by non-Amico personnel. Failure to follow these guidelines could result in serious injury.

It shall be the responsibility of the hospital, its consultants and/or contractors to determine if the wall is adequate to safely mount the specific instrument. This includes the selection of appropriate fasteners and the proper installation, regardless of what is supplied with your Condor.

Verify the weight of the device to be mounted. (Condors are rated for a maximum of 40 lbs (18.1 kg) or 30 lbs (13.6 kg), depending on the model you purchased). Check that the device to be mounted does not exceed the weight rating. Serious injury and damage to the Condor can occur as a result of overloading arm assembly.

If you are unsure of your application, please contact an Amico Accessories product Specialist at 1-877-264-2697. Considerable efforts have been made to ensure the safety of your hospital staff and your patients. The installation itself is beyond the control of Amico Accessories Inc.. Accordingly, Amico Accessories Inc. will not be responsible for failure related to the installation of the product.

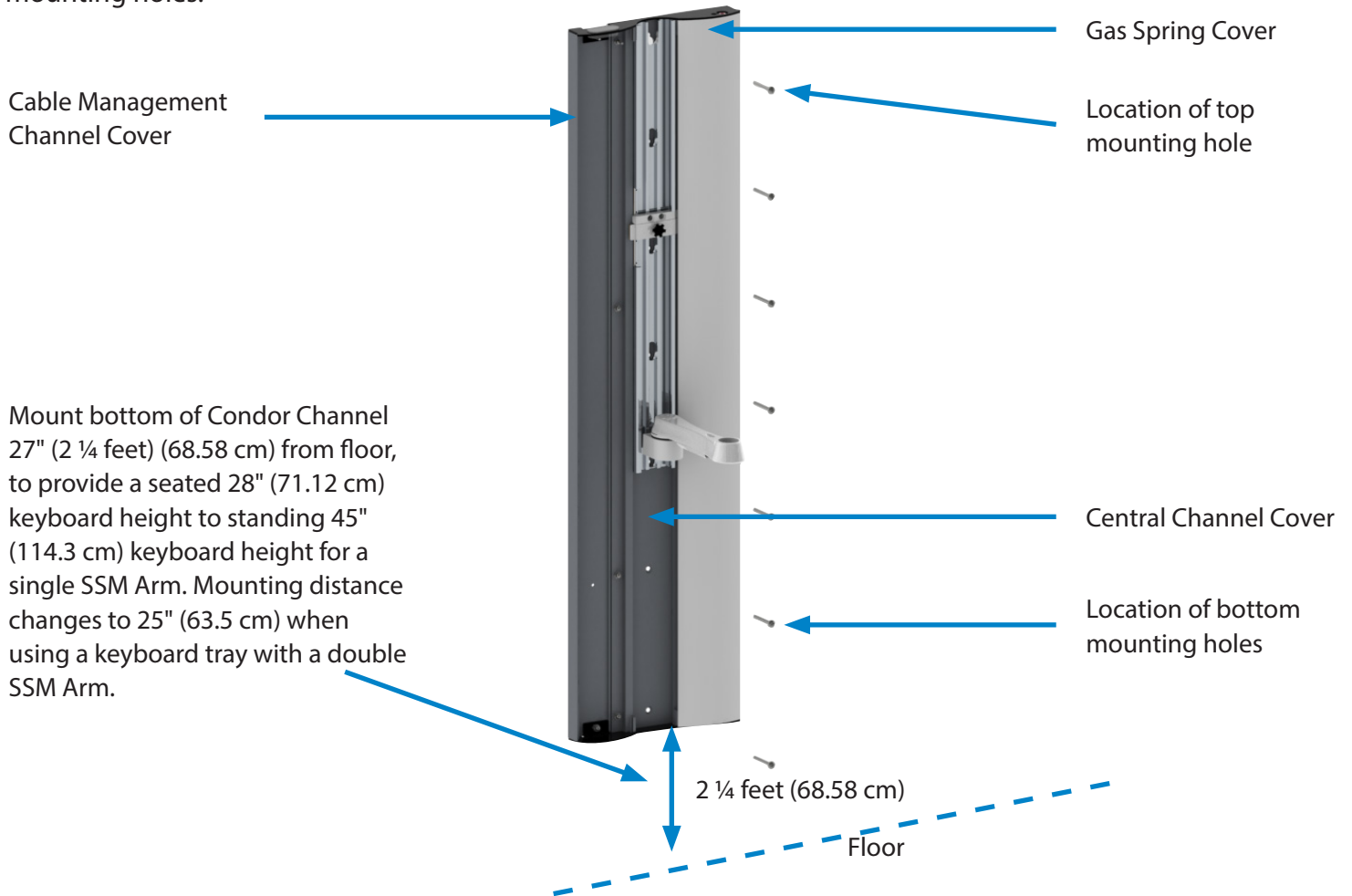
CONTACT AMICO ACCESSORIES INC. TO DISCUSS SOLUTIONS NOT COVERED IN THIS MANUAL AT 1-877-264-2697

# SECTION 3:

## Installation on Wall

### Mounting Preparation

The Condor comes with a set of channel covers. Remove the central channel cover to expose all 7 wall mounting holes.



Mount bottom of Condor Channel 27" (2 ¼ feet) (68.58 cm) from floor, to provide a seated 28" (71.12 cm) keyboard height to standing 45" (114.3 cm) keyboard height for a single SSM Arm. Mounting distance changes to 25" (63.5 cm) when using a keyboard tray with a double SSM Arm.

### Mounting on wall with studs/backing:

**NOTE:** Depending on whether a single or double SSM arm is used, the mounting height of the Condor Channel will change. This is because in a double SSM, the keyboard tray and monitor head is 2" (5.08 cm) higher due to the layering of the arms.

1. Locate and mark the top mounting hole at a distance of 69"/168 cm from the floor for a configuration using single SSM arms, and 71"/180 cm from the floor for a configuration using double SSM arms.
2. Drill a 9/64" (0.35 cm) diameter hole and secure one ¼ -20 x 2 ½ (0.635 - 50.8 cm x 6.35 cm) tapping screws.
3. Hang the top mounting hole of the Condor (key-hole style) to this screw.
4. Mark remaining 6 holes as shown in Figure 2, checking to ensure Condor is plumb, flush and level.
5. Secure the Condor using remaining ¼ -20 x 2 ½" (0.635 - 50.8 cm x 6.35 cm) tapping screws.
6. Correctly installed Condor should be flush against the wall and will not wobble side to side or up and down. If your Condor is behaving differently please contact an Amico Accessories Inc. Product Specialist at 1-877-264-2697.



## SECTION 3: Installation on Wall

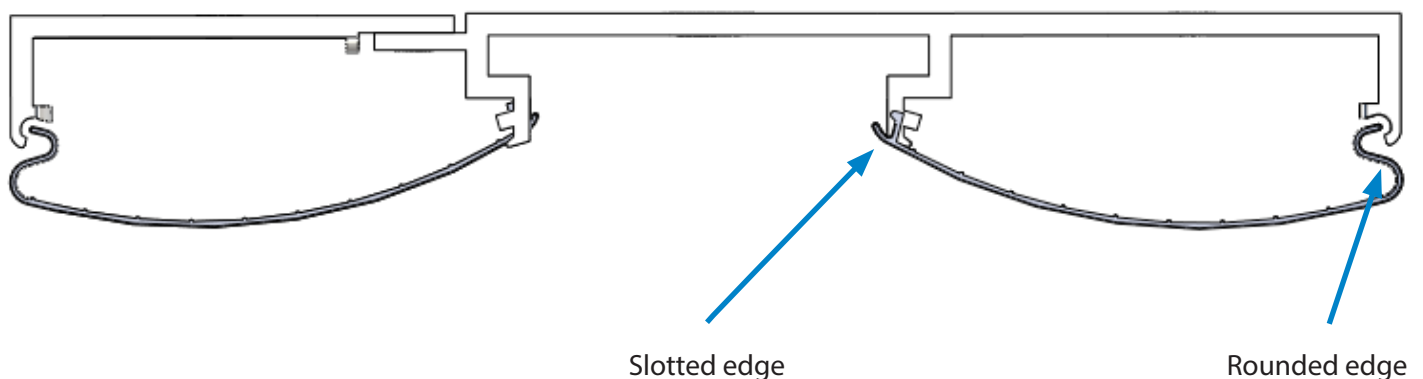
### Mounting on hollow wall:

1. Locate and mark the top mounting hole at a distance of 69"/168 cm from the floor for a configuration using single SSM arms, and 71"/180 cm from the floor for a configuration using double SSM arms.
2. Use the Condor as a template to mark the remaining mounting holes, checking to ensure the Condor is kept plumb, flush and level.
3. Drill ½ inch holes at each marked position.
4. Install snap-toggles in all 7 holes:
  - a. Hold snap-toggle metal channel flat alongside plastic straps and slide metal channel through hole.
  - b. Hold both ends of plastic straps; pull toward you until channel rests flush behind wall. Slide plastic cap along straps with other hand until flange of cap is flush with wall.
  - c. "Snap" the straps to break away at the plastic cap.
4. Hang the Condor on the top screw and secure with ¼ -20 x 2 ½" (0.635 - 50.8 cm x 6.35 cm) flat head socket screw.
5. Secure remaining screws in holes.

### General instruction for opening and closing the Condor covers (Refer to Figure 3)

The slotted edge is always closer to the mounting channel and the rounded edge is always outside as shown in **figure 3**. Both left and right covers are opened by inserting a flat-head screwdriver in the gap located along the mounting channel and levering up. While closing, first insert the slotted edge and squeeze-in the rounded edge on one end and follow towards the other end.

Figure 3



## SECTION 4: EQUIPMENT INSTALLATION

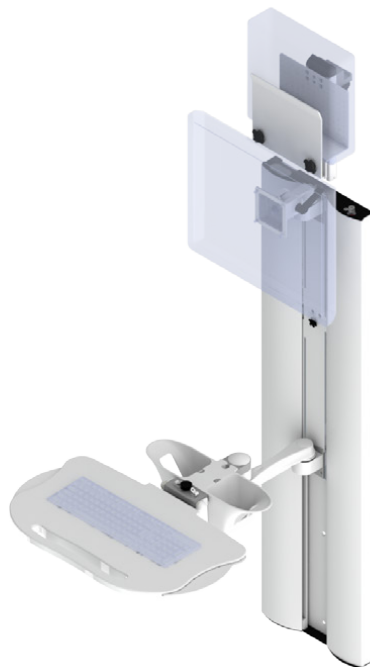
### Equipment Mounting Recommendations

The following mounting configurations are recommended for safe mounting on Condor

#### **Keyboard and Monitor Flush**



#### **Monitor Flush and Keyboard with 9"/12" (22.86 cm/ 30.48 cm) SSM Arm**



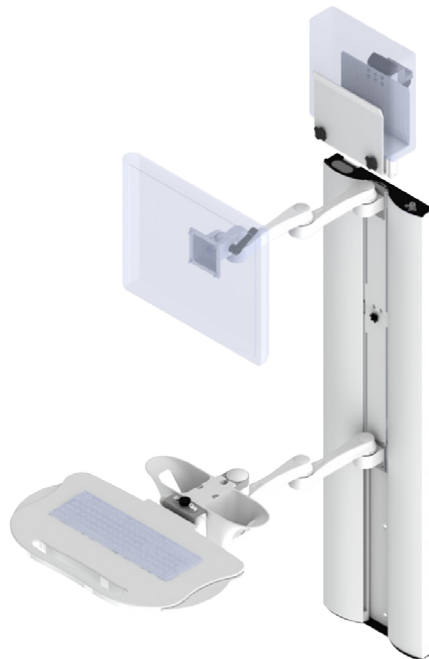
## SECTION 4: EQUIPMENT INSTALLATION

### Equipment Mounting Recommendations

#### **Monitor on 12" (30.48 cm) SSM Arm and Keyboard on 9" x 9" (22.86 cm x 22.86 cm) SSM Arm**



#### **Both Monitor and Keyboard on 9" x 9" (22.86 cm x 22.86 cm) SSM Arm**



It is advised to mount CPU near top left of Condor; with power and data outlets close to CPU for convenience in cable management. Consider using USB cable extensions or a USB hub if necessary for keyboard, mouse and/or scanner cables.

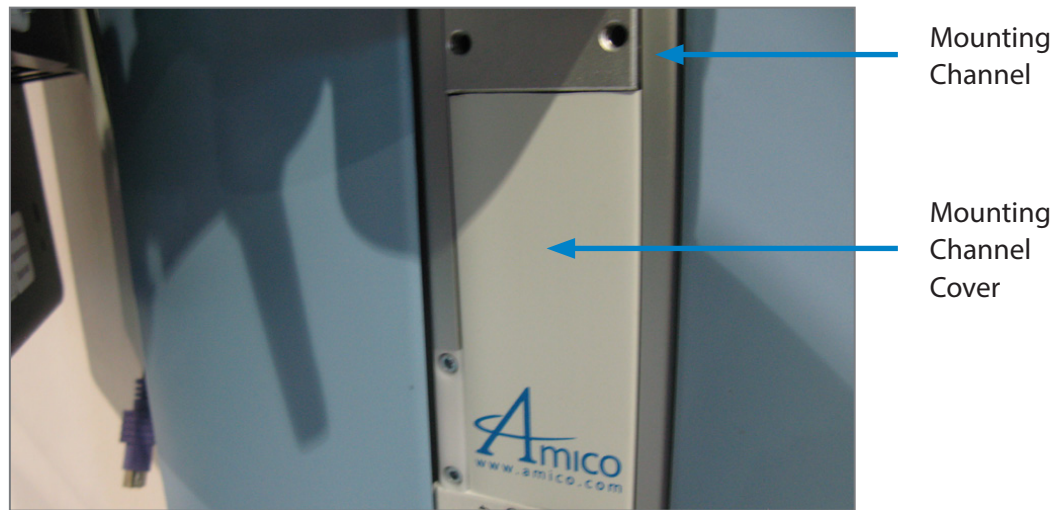
# MOUNTING OF ACCESSORIES

Mounting of accessories to the mounting channel can be done by mounting the accessories to an adapter first.

**WARNING** To prevent the adapter from sliding down the channel, ensure the four set screws are fastened to the tightest possible position, serious injuries could result if the set screws are not properly fastened.

**NOTE:** Top and bottom stopper are there to prevent the adapter from sliding out of the MRS. The adapter must be taken out from the top of the rail with the top stopper pressed back into the rail

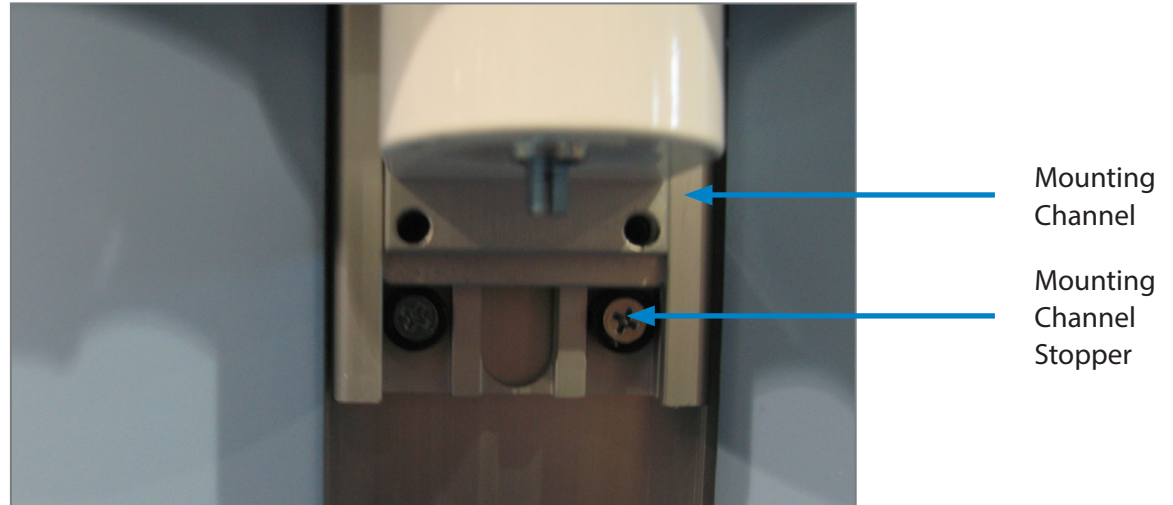
1. Install the adapter onto the accessory to be installed. Before installation, please determine the approximate position on the mounting channel that the accessory will be mounted. Remove both top and bottom Mounting Channel covers (**Figure 4**)



**Figure 4**

2. If the accessory is to be mounted in the upper half of the mounting channel, then guide the MON Adapter into the mounting channel from the top. For more detail, please see installation manual for accessory on how to mount to a MRS Rail.
3. If the accessory is to be mounted in the lower half of the mounting channel, first remove the mounting channel stoppers on the bottom of the mounting channel using a Phillips screwdriver (**Figure 5**). Then guide the MON Adapter into the mounting channel from the bottom. For more detail, please see installation manual for accessory on how to mount to a MRS Rail.

## MOUNTING OF ACCESSORIES



**Figure 5**

4. Once the accessory is at the desired height, tighten all four set screws to the tightest possible position on the adapter using 1/8" (0.3175 cm) hex key.
5. Re-install the mounting channel stoppers onto the mounting channel by attaching them to the two holes on the bottom of the channel (**Figure 5**).



**WARNING**

The channel stoppers will break if screw is over tightened.

6. Reinstall the mounting channel covers, trim off excess covers in order to fit them into the channel (**Figure 4**).

## SECTION 5: Adjustments



### **WARNING**

Do not over-rotate the counterbalance bolt. Once you feel resistance, stop. Forcing the bolt will damage the internals of the Condor and void the warranty.

**NOTE:** Only adjust if necessary.

### **Adjusting the Counterbalance**

1. Once the Condor is securely installed, tighten the locking knob to lock the Condor.
2. To adjust for heavier loads, slowly loosen the counterbalance bolt rotating counter-clockwise, located on the top right corner of the Condor. To adjust for lighter loads, slowly tighten the counterbalance bolt, rotating clockwise using a ½" (1.27 cm) socket wrench.
3. Release the locking lever. If the arm has been correctly balanced, the arm will not drop or lift and it will remain in the same position. Ensure the arm is balanced from the lowest to the highest position by checking in various positions.
4. If arm is not correctly balanced, repeat from step 1.

### **Adjusting Inter-Accessory Distance**

1. Once the Condor is securely installed, tighten the locking knob to lock the Condor.
2. Loosen the set screws on the adapter holding the accessory that will be moved, using an Allen Key size 1/8" (0.3175 cm).
3. Holding the weight of the accessory, move it up and down in the channel until it reaches the desired position.
4. Tighten the set screws.

## SECTION 6: Cable Management

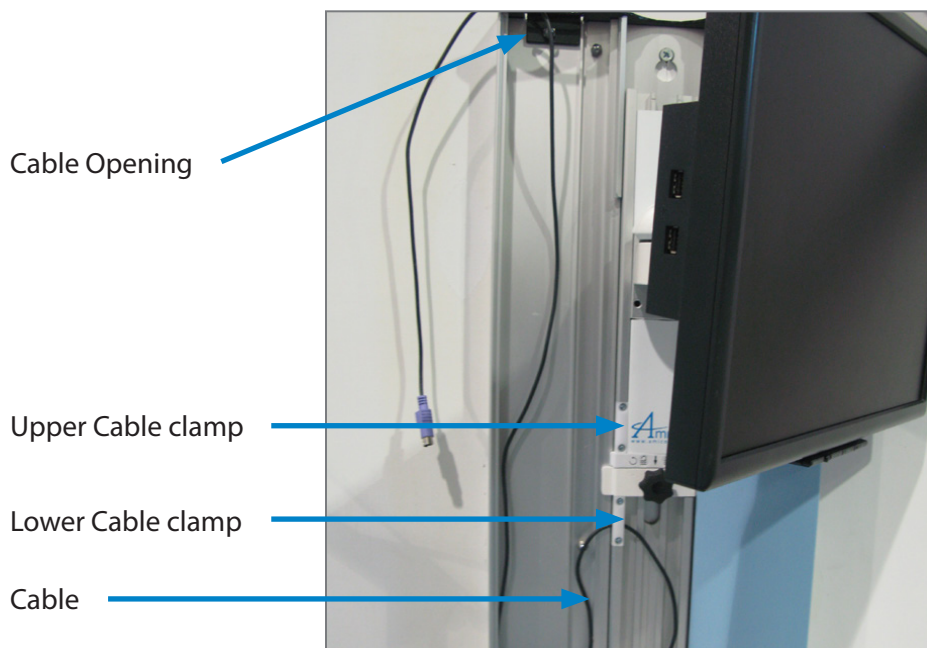
### Cable Requirement for CPU Mounting on Top

Cable length minimum: 10 feet (304.8 cm), maximum number of cables: 5

### Cable Routing Procedure

**NOTE:** All accessories should be mounted and properly positioned before cable management procedures.

1. Release Condor Lock and bring Condor mounting channel to top most position and re-lock.
2. Open Condor left cover (**Figure 3**).
3. Remove both top and bottom Channel Covers as well as both cable clamps.
4. Take the cables from the monitor side (upper half) of the Mounting Channel and direct them into the space occupied by the Upper Cable clamp.
5. Install the Upper Cable clamp back into its original space and clamp over the cables going through it. Ensure the fit is tight and the cables cannot move around inside.
6. Do the same with cables coming from the keyboard tray side (lower half) of the Mounting Channel; make sure the cables are clamped tightly in the Cable clamps.
7. Leave 4-6 feet (121.92-182.88 cm) of cables inside the left side cavity of the Condor for the cables to move around. Insert the rest of the cables through the top/bottom cap. Whether the cables exit from the top or bottom side of the Condor should depend on the positioning of the CPU in relation to the Condor.
8. Connect the cables to the CPU.
9. Replace the Channel Covers by sliding them into the Mounting Channel, covering up the cables. Trim off any excess Channel Covers.
10. Replace the left Condor cover.



**Figure 6**

## SECTION 7:

### Maintenance, Troubleshooting and Product Classification

#### Troubleshooting

##### **Condor Mounting Channel is Drifting Upwards or Downwards**

Counter-balancing mechanism is not set appropriately for the given load.

- Counter-balancing mechanism can be corrected by tightening or loosening the screw embedded inside the top right corner of the Condor. Turn clockwise for lighter loads and counter-clockwise for heavier loads.
- If Condor is still not counter balanced at the limit of the adjustable range, contact Amico Accessories for a replacement gas spring.

##### **Condor Mounting Channel is Not Drifting, But is Too Hard to Move Up/Down**

Counter-balancing mechanism is not set appropriately for the given load.

- Counter-balancing mechanism can be corrected by tightening or loosening the screw embedded inside the top right corner of the Condor. Turn clockwise for lighter loads and counter-clockwise for heavier loads.
- If Condor is still not counter balanced at the limit of the adjustable range, contact Amico Accessories for a replacement gas spring.

##### **Loud/Unnatural Noise When Moving the Channel**

This indicates that the internals are damaged, please move the channel to the lowest position, engage the lock, and contact Amico Accessories.

##### **There is Debris on the Bottom of the Condor or on the Ground Beneath the Condor**

This indicates that there is grinding or scraping of the internals, please move the channel to the lowest position, engage the lock, and contact Amico Accessories.



## SECTION 7:

# Maintenance, Troubleshooting and Product Classification

### Preventative Maintenance



#### **WARNING**

The Condor requires periodic inspection and maintenance to perform optimally and achieve maximum operation life. The intervals shown below are recommended. Maintenance schedules should be shortened for Condors that see heavy use.

**NOTE:** Please follow the Preventative maintenance protocol for the accessories as stated in the manual for those accessories.

Please be sure to thoroughly check the areas illustrated below for Condors.

#### **Area 1: Mounting Channel and Track System**

- a. Visually inspect for any signs of grinding and gapping along the sides of the channel.
- b. Check if the accessories are mounted properly and tightly to the channel.
- c. Remove the MRS cover and ensure that the cables are staying inside the tracks and are not tangled.

#### **Area 2: Cable Management Clamps**

- a. Visually inspect for any signs of grinding by checking for debris around the part.
- b. Make sure the screws are tightly installed and the cables are clamped down properly.

#### **Area 3: Cable Management Side**

- a. Remove cover and check if there is grinding or tangling of cables inside.

#### **Area 4: Force Adjuster Side**

- a. Visually inspect for any signs of grinding and gapping on the pulleys as well as on the side of extrusions.
- b. **Pulleys:** Ensure the screws holding the pulleys are fastened tightly.
- c. **Spring:** Visually inspect the spring to see if there has been any damage to the outer shell.
- d. **Threaded rod:** check for bending and damage to the threads.

# PRODUCT CLASSIFICATION

## AHC-1-L4-K4-C2



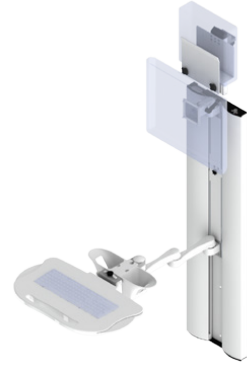
- Includes flush LCD SSM arm – provides tilt and swivel
- Includes flush keyboard SSM arm – provides swivel and negative tilt
- Folds to less than 10" (25.4 cm) from wall
- Keyboard extends 23" (58.42 cm) from wall

## AHC-1-L4-K0-C2



- Includes flush LCD SSM arm – provides tilt and swivel
- Includes 12" (30.48 cm) keyboard SSM arm – provides swivel, articulation and negative tilt
- Folds to less than 10" (25.4 cm) from wall
- Keyboard extends 33" (83.82 cm) from wall

## AHC-1-L4-K1-C2



- Includes flush LCD SSM arm – provides tilt and swivel
- Includes 12"x12" (30.48 cm x 30.48 cm) keyboard SSM arm – provides swivel, articulation and negative tilt
- Folds to less than 10" (25.4 cm) from wall
- Keyboard extends 43" (109.22 cm) from wall

## AHC-1-L0-K0-C2



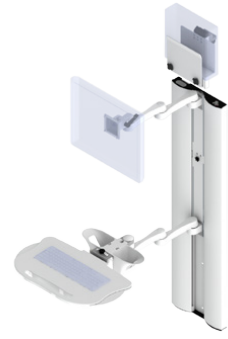
- Includes 12" (30.48 cm) LCD SSM arm – provides tilt, articulation and swivel
- Includes 12" (30.48 cm) keyboard SSM arm – provides swivel, articulation and negative tilt
- Folds to less than 10" (25.4 cm) from wall
- Keyboard extends 33" (83.82 cm) from wall, LCD extends 17" (43.18 cm) from wall

## AHC-1-L0-K1-C2



- Includes 12" (30.48 cm) LCD SSM arm – provides tilt, articulation and swivel
- Includes 12"x12" (30.48 cm x 30.48 cm) keyboard SSM arm – provides swivel, articulation and negative tilt
- Folds to less than 10" (25.4 cm) from wall
- Keyboard extends 43" (109.22 cm) from wall, LCD extends 17" (43.18 cm) from wall

## AHC-1-L1-K1-C2



- Includes 12"x12" (30.48 cm x 30.48 cm) LCD SSM arm – provides tilt, articulation and swivel
- Includes 12"x12" (30.48 cm x 30.48 cm) keyboard SSM arm – provides swivel, articulation and negative tilt
- Folds to less than 10" (25.4 cm) from wall
- Keyboard extends 43" (109.22 cm) from wall, LCD extends 27" (68.58 cm) from wall

## AHC-1-LF-KF-C2



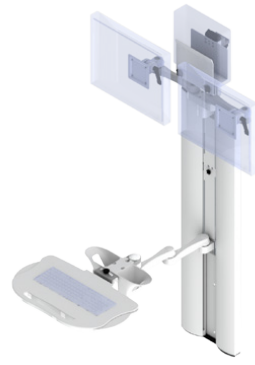
- Includes ultra flush LCD mount
- Includes ultra flush keyboard SSM arm – provides negative tilt
- Folds less than 5" (12.7 cm) from the wall
- Keyboard extends 17" (43.18 cm) from wall

## AHC-1-LD-K4-C2



- Includes dual screen mount – provides tilt, swivel and articulation for both monitors
- Includes flush keyboard SSM arm – provides swivel and negative tilt
- Folds to less than 10" (25.4 cm) from wall
- Keyboard extends 23" (58.42 cm) from wall

## AHC-1-LD-K3-C2



- Includes dual screen mount – provides tilt, swivel and articulation for both monitors
- Includes 12"x12" (30.48 cm x 30.48 cm) keyboard SSM arm – provides swivel and negative tilt
- Folds to less than 10" (25.4 cm) from wall
- Keyboard extends 43" (109.22 cm) from wall

# CLEANING

**WARNING**

The cleaning chemicals and methods below are not meant for controlling any infections. It shall be the responsibility of the hospital or the hospital's infection control officer to sanitize the equipment.

**WARNING**

Please do not spray any chemical directly onto the arm. Apply onto a soft cloth and wipe clean to prevent chemicals getting into the internal components of the arm.

The mounting assembly may be cleaned with most mild, non-abrasive solutions commonly used in the hospital environment (e.g. diluted bleach, ammonia, or alcohol solutions). No Acetone. No Trichloroethylene. The surface finish will be permanently damaged by strong chemical and solvent such as acetone and trichloroethylene. Steel wool or other abrasive material should never be used.

Damage caused by the use of unapproved substances or processes will not be warranted. It is recommended that you test any cleaning solution on a small area of the Condor that is not visible to verify compatibility.

Never submerge the Condor and do not allow liquids to enter it. Wipe any cleaning agents off the Condor immediately using a water-dampened cloth. Dry the arm thoroughly after.

# www.amico.com

Amico Accessories Inc. | [www.amico.com](http://www.amico.com)

85 Fulton Way, Richmond Hill  
Ontario, L4B 2N4, Canada

71 East Industry Court, Deer Park  
NY 11729, U.S.A

Toll Free Tel: 1.877.264.2697

Toll Free Fax: 1.866.440.4986

Tel: 905.763.7778

Fax: 905.763.8587

Email: [info@amico.com](mailto:info@amico.com)