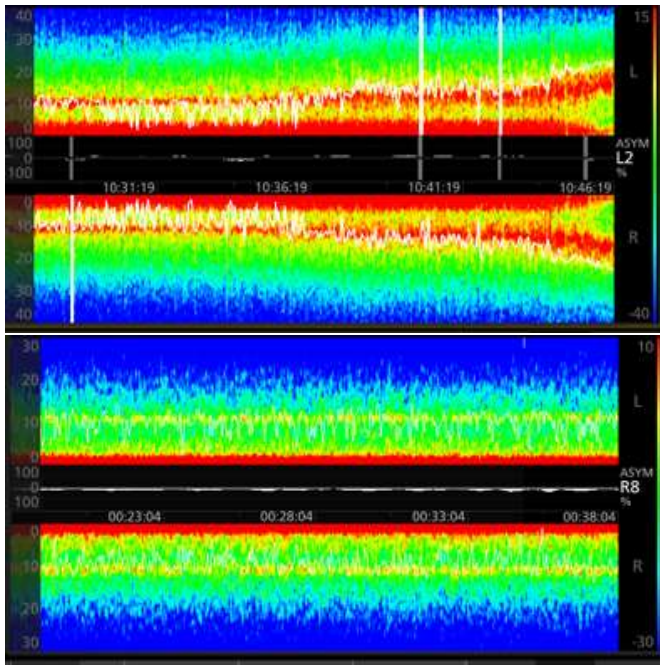


Interpreting the DSA

Delta waves are always present, they increase during administration of hypnotic medications



TIVA Anaesthetic. Propofol 8-12Hz

Predominance of power

Delta 0-4Hz and Alpha 8-12Hz.

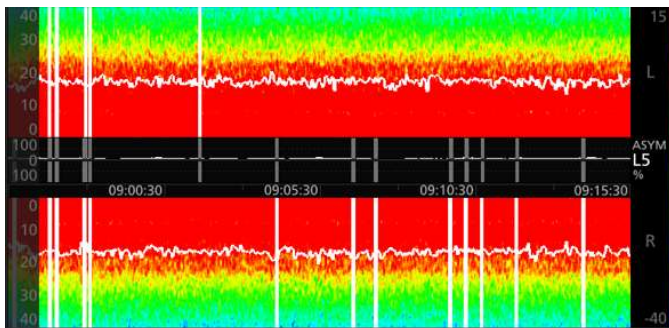
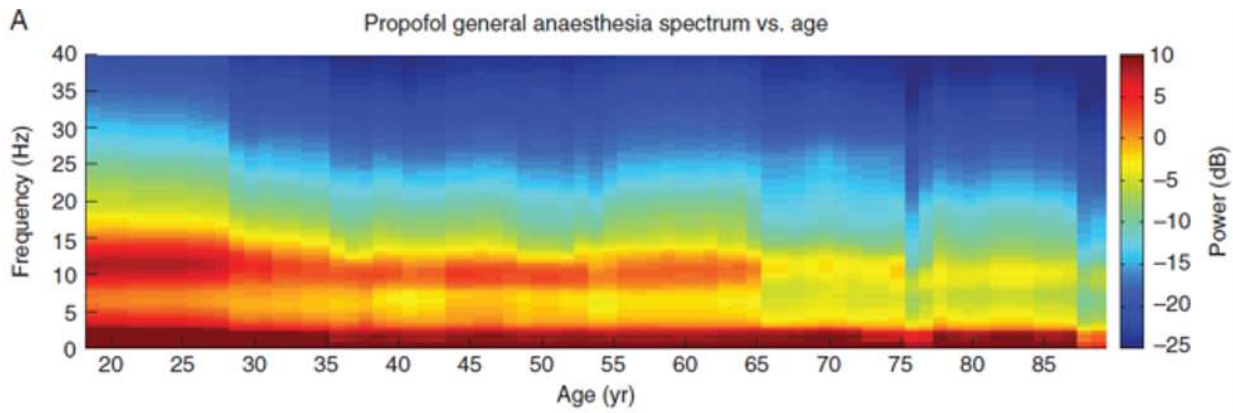
This image shows a loss of hypnotic effect or unzipping of the DSA

Also, **TIVA** Anaesthetic.

Predominance of power Delta and Alpha.

Older brain = less power / less color

Loss of Power with Age



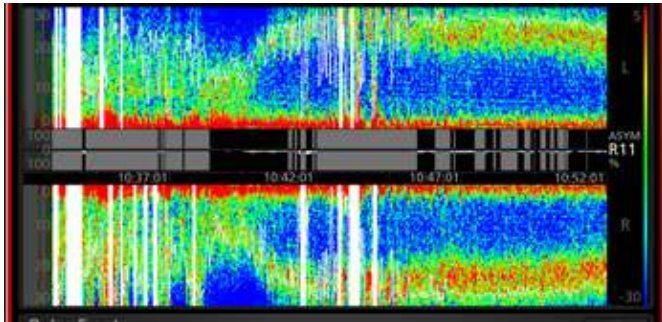
Volatile Anaesthetic.

Power at Delta and Alpha with a filling effect of theta waves 4-8Hz.

Young brain (8Yo), Bright color

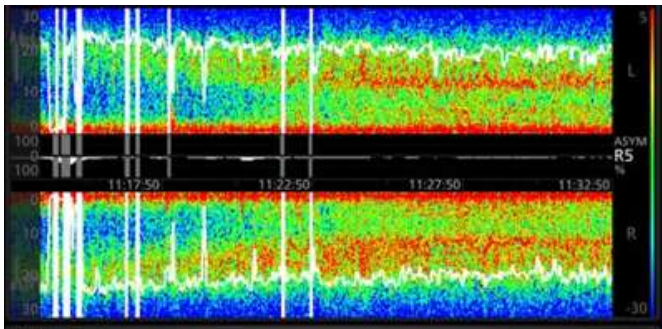
The DSA will show the predominate hypnotic drug effect, adjunctive doses may be seen in the DSA as changes in SEF and power

Interpreting the DSA



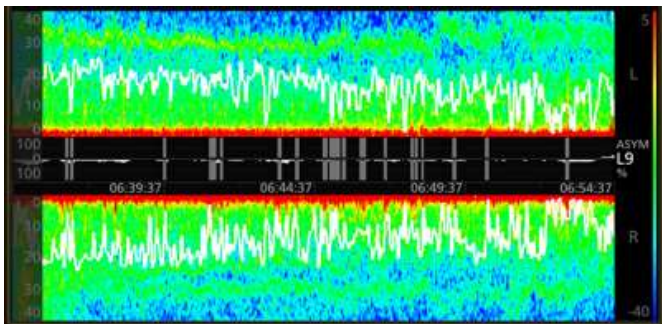
Ketamine Induction 25Hz

Predominance of power Delta 0-4Hz
and Beta 12-30Hz.



Ketamine Induction, TIVA maintenance

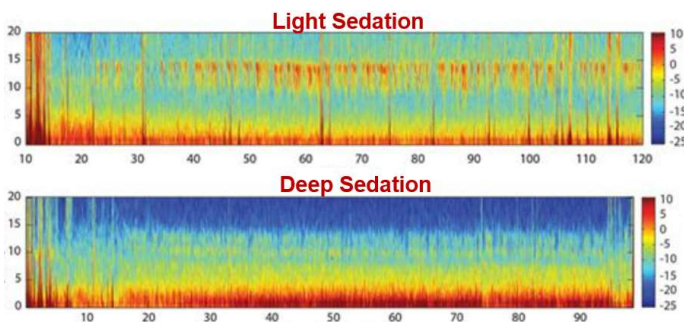
EEG slowing from 20-25Hz to 10-12Hz.



N2O

Nitrous oxide also causes high frequency
oscillation Beta waves.

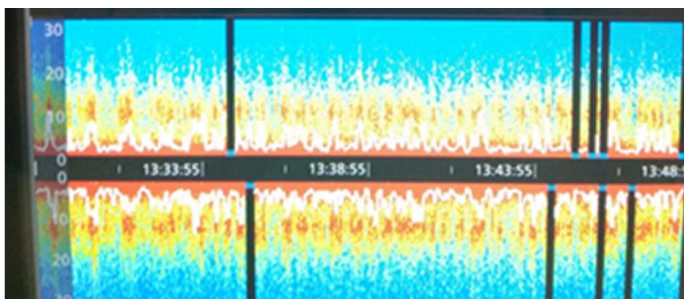
Old brain 95Yo



Dexmedetomidine

Interrupted Alpha 10-12Hz Light sedation.

Deep Sedation predominance of Delta
waves



Midazolam

Interrupted Alpha 10-12Hz.

Oscillating Spectral edge Frequency